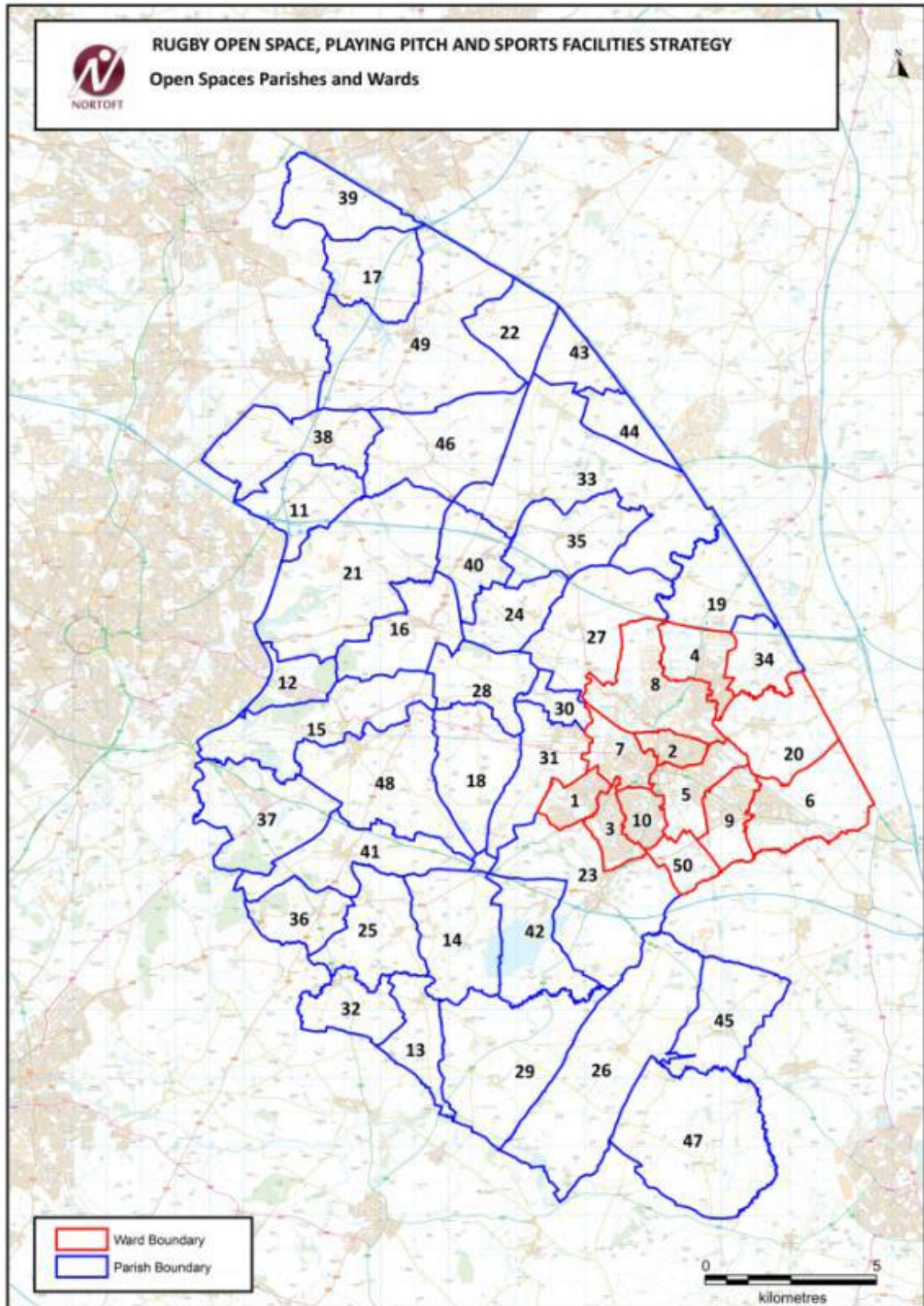


APPENDIX 4

OPEN SPACE PROVISION TABLES

Introduction:

This appendix provides details of open space provision in the Borough in relation to policy HS4. The Map below displays the parish and ward boundaries to which the open space provision table relates to.



Ref	Parish/Ward	Population	Provision (ha)	Children's Play 0.2ha per 1,000 pop	Nat and semi natural 2.5a per 1,000 pop	Amenity Green Space 0.5 per 1,000 pop	Allotments 0.65 ha per 1,000 pop	Parks and Gardens 1.5ha per 1,000 pop
1	Admirals and Cawston Ward	7846	Current Provision	1.36	4.53	29.37	0	0.59
			Surplus /Deficit	-0.21	-15.09	20.74	-5.10	-11.18
2	Benn Ward	8203	Current Provision	0.38	1.11	1.01	0	5.07
			Surplus /Deficit	-1.26	-19.40	-8.01	-5.33	-7.23
3	Bilton Ward	6196	Current Provision	0.12	6.85	3.79	5.95	5.08
			Surplus /Deficit	-1.12	-8.64	-3.03	1.92	-4.21
4	Coton and Boughton Ward	6503	Current Provision	0.4	31.39	16.6	0.00	0
			Surplus /Deficit	-1.08	15.13	9.45	-4.23	-9.75
5	Eastlands Ward	7982	Current Provision	0.34	21.02	4.69	5.78	14.05
			Surplus /Deficit	-1.26	1.07	-4.09	0.59	2.08
6	Hillmorton Ward	5289	Current Provision	0.51	1.77	4.82	0	4.28
			Surplus /Deficit	-0.55	-11.45	-1.00	-3.44	-3.65
7	New Bilton Ward	8298	Current Provision	0.54	4.19	4.63	3.58	7.82

Ref	Parish/Ward	Population	Provision (ha)	Children's Play 0.2ha per 1,000 pop	Nat and semi natural 2.5a per 1,000 pop	Amenity Green Space 0.5 per 1,000 pop	Allotments 0.65 ha per 1,000 pop	Parks and Gardens 1.5ha per 1,000 pop
			Surplus /Deficit	-1.12	-16.56	-4.50	-1.81	-4.63
8	Newbold and Brownsover Ward	7594	Current Provision	0.44	49.02	20.39	1.82	2.82
			Surplus /Deficit	-1.08	30.04	12.04	-3.12	-8.57
9	Paddox Ward	6892	Current Provision	0.57	60.67	1.1	3.53	13.91
			Surplus /Deficit	-0.81	43.44	-6.48	-0.95	3.57
10	Rokeyby and Overslade Ward	7831	Current Provision	0.54	0	19.92	0	0
			Surplus /Deficit	-1.03	-19.58	11.31	-5.09	-11.75

Ref	Parish	Population	Provision	Children's Play 0.2 per 1,000 pop	Nat and semi natural 2.5 per 1,000 pop	Amenity Green Space 0.5 per 1,000 pop	Allotments 0.8ha per 1,000 pop	Parks and Gardens (1ha per 1000 pop)
11	Ansty CP	328	Current Provision	0.02	0	0.94	0.41	0
			Surplus /Deficit	-0.05	-0.82	0.78	0.2	-0.33
12	Binley Woods CP	2,665	Current Provision	0.026	53.78	2.74	0.91	0
			Surplus /Deficit	-0.51	47.12	1.41	-0.82	-2.67
13	Birdingbury CP	324	Current Provision	0.307		0.43	0.40	0
			Surplus /Deficit	0.24	-0.81	0.27	0.19	-0.32
14	Bourton and Draycote CP	267	Current Provision	0	0	0	0	0
			Surplus /Deficit	-0.05	-0.67	-0.13	-0.17	-0.27
15	Brandon and Bretford CP	630	Current Provision	0.04	0	1.55	0	0
			Surplus /Deficit	-0.09	-1.58	1.24	-0.41	-0.63
16	Brinklow CP	1144	Current Provision	0.08	3.74	0.48	1.18	1.96
			Surplus /Deficit	-0.15	0.88	-0.09	0.44	0.82
17	Burton Hastings CP	241	Current Provision	0	0	0	0	0
			Surplus /Deficit	-0.05	-0.6	-0.12	-0.16	-0.24

Ref	Parish	Population	Provision	Children's Play 0.2 per 1,000 pop	Nat and semi natural 2.5 per 1,000 pop	Amenity Green Space 0.5 per 1,000 pop	Allotments 0.8ha per 1,000 pop	Parks and Gardens (1ha per 1000 pop)
18	Church Lawford CP	335	Current Provision	0		0.31	0.08	0
			Surplus /Deficit	-0.07	-0.84	0.14	-0.14	-0.34
19	Churchover CP	339	Current Provision	0	0	0	0.08	0
			Surplus /Deficit	-0.07	-0.85	0.17	-0.14	-0.34
20	Clifton upon Dunsmore CP	1374	Current Provision	0.12	0.75	11.96	1.59	2.64
			Surplus /Deficit	-0.15	-2.69	11.27	0.7	1.3
21	Combe Fields CP	115	Current Provision	0	0	0	0	0
			Surplus /Deficit	-0.02	-0.29	-0.06	-0.07	-0.12
22	Copston Magna CP	24	Current Provision	0	0	0	0	0
			Surplus /Deficit	0	-0.06	-0.01	-0.02	-0.02
23	Dunchurch CP	3069	Current Provision	0.13	18.03	1.54	1.51	2.73
			Surplus /Deficit	-0.48	10.36	0	-0.48	-0.34
24	Easenhall CP	377	Current Provision	0	0	0.08	0	0
			Surplus /Deficit	-0.08	-0.94	-0.11	-0.25	0.38

Ref	Parish	Population	Provision	Children's Play 0.2 per 1,000 pop	Nat and semi natural 2.5 per 1,000 pop	Amenity Green Space 0.5 per 1,000 pop	Allotments 0.8ha per 1,000 pop	Parks and Gardens (1ha per 1000 pop)
25	Frankton CP	327	Current Provision	0	0	0.08	0	0
			Surplus /Deficit	-0.07	-0.82	-0.08	-0.21	-0.33
26	Grandborough CP	420	Current Provision	0	0	0	0	0
			Surplus /Deficit	-0.08	-1.05	-0.21	-0.27	-0.42
27	Harborough Magna CP	452	Current Provision	0.2	0	0	0	0
			Surplus /Deficit	0.11	-1.13	-0.23	-0.29	-0.45
28	King's Newnham CP	48	Current Provision	0	0	0	0	0
			Surplus /Deficit	-0.01	-.12	-0.02	-0.03	-0.05
29	Leamington Hastings CP	439	Current Provision	0	0	0.78	0	0
			Surplus /Deficit	-0.09	-1.1	0.56	-0.29	-0.44
30	Little Lawford CP	42	Current Provision	0	0	0	0	0
			Surplus /Deficit	-0.01	-0.11	-0.02	-0.03	-0.04
31	Long Lawford CP	3173	Current Provision	0.47	2.66	3.77	2.81	2.13
			Surplus /Deficit	-0.16	-5.27	2.33	0.75	-1.04
32	Marton CP	490	Current Provision	0.05	0	2.33	0	0

Ref	Parish	Population	Provision	Children's Play 0.2 per 1,000 pop	Nat and semi natural 2.5 per 1,000 pop	Amenity Green Space 0.5 per 1,000 pop	Allotments 0.8ha per 1,000 pop	Parks and Gardens (1ha per 1000 pop)
			Surplus /Deficit	-0.05	-1.23	2.09	-0.32	-0.49
33	Monks Kirby CP	437	Current Provision	0.13	0	0.57	0	0
			Surplus /Deficit	0.04	-1.09	0.35	-0.28	-0.44
34	Newton and Biggin CP	415	Current Provision	0	0	0	0.91	0
			Surplus /Deficit	-0.08	-1.04	-0.21	0.64	-0.42
35	Pailton CP	512	Current Provision	0.02	0	0.2	0.56	0
			Surplus /Deficit	-0.08	-1.28	-0.06	0.23	-0.51
36	Princethorpe CP	401	Current Provision	0.13	0	0	0.48	0
			Surplus /Deficit	0.05	-1	-0.2	0.22	-0.4
37	Ryton-on-Dunsmore CP	1813	Current Provision	0.24	32.07	0.62	0.34	24.34
			Surplus /Deficit	0	29.12	0.03	-0.43	22.53
38	Shilton and Barnacle CP	887	Current Provision	0.08	27.54	0	0	0
			Surplus /Deficit	-0.1	25.32	-0.44	-0.58	-0.02

Ref	Parish	Population	Provision	Children's Play 0.2 per 1,000 pop	Nat and semi natural 2.5 per 1,000 pop	Amenity Green Space 0.5 per 1,000 pop	Allotments 0.8ha per 1,000 pop	Parks and Gardens (1ha per 1000 pop)
39	Stretton Baskerville CP	24	Current Provision	0	0	0	0	0
			Surplus /Deficit	0.00	-0.06	-0.01	-0.02	-0.02
40	Stretton under Fosse CP	213	Current Provision	0	0	0	0	0
			Surplus /Deficit	-0.04	-0.53	-0.11	-0.14	-0.21
41	Stretton-on-Dunsmore CP	1159	Current Provision	0.23	0.00	1.83	1	1.35
			Surplus /Deficit	0	-2.90	1.25	0.25	0.19
42	Thurlaston CP	331	Current Provision	0.47	0	0	0	0
			Surplus /Deficit	0.4	-0.83	-0.17	-0.22	-0.33
43	Wibtoft CP	53	Current Provision	0	0	0	0	0
			Surplus /Deficit	-0.01	-0.13	-0.03	-0.03	-0.05
44	Willey CP	85	Current Provision	0	0	0	0.11	0
			Surplus /Deficit	-0.02	-0.21	-0.04	0.05	-0.09
45	Willoughby CP	458	Current Provision	0.09	0	0.3	0	0
			Surplus /Deficit	0	-1.15	0.07	-0.3	-0.46

Ref	Parish	Population	Provision	Children's Play 0.2 per 1,000 pop	Nat and semi natural 2.5 per 1,000 pop	Amenity Green Space 0.5 per 1,000 pop	Allotments 0.8ha per 1,000 pop	Parks and Gardens (1ha per 1000 pop)
46	Withybrook CP	289	Current Provision	0.02	0	0.17	0.02	0
			Surplus /Deficit	-0.04	-0.72	0.03	-0.17	-0.29
47	Wolfhampcote CP	267	Current Provision	0	0	0.38	0.56	0
			Surplus /Deficit	-0.05	-0.67	0.25	0.39	-0.27
48	Wolston CP	2577	Current Provision	0.29	5.76	2.48	4.69	5.98
			Surplus /Deficit	-0.23	-0.68	1.19	3.01	3.4
49	Wolvey CP	1832	Current Provision	0.13	1.38	2.50	0.24	0
			Surplus /Deficit	-0.24	-3.20	1.58	-0.95	-1.83

Notes:

1: Population Source: 2012 Projections from Open Space, Playing Pitch and Sports Facilities Study 2015

2: Current provision is total area in ha.

3: Amenity Green Space provision based on sites larger than 0.2 ha which has a recreational function (excludes incidental open space within housing developments and roadside verges)

4: Surplus/deficit is total area figure.

