

Engagement on Local Plan consultation in particular with local residents

Introduction

1. This note details the extent of consultation the council undertook in the development of the local plan within the context of the adopted Statement of Community Involvement (SCI), 2015.
2. The two key documents relating to this note are LP 25 Statement of Community Engagement (SCI) and LP26 Regulation 22 Consultation Statement.

Engagement with local communities

3. The SCI (LP25) identifies the stages of the consultation process for the production of a new Local Plan, including the consultation methods used at each stage of consultation (SCI, page 13, Paragraph 3.5.2). The SCI recognises the need to reach a broad cross-section of residents when consulting (SCI, p10).
4. At each stage of the Local Plan consultation all individuals and organisations who had expressed an interest in the plan or had previously been consulted were contacted in writing to inform them of the extent of the consultation periods and availability of documents (LP26, p5- Appendix 1, includes the full list of organisations consulted). It should be noted that certain organisations on the Council's consultation database also conducted their own consultation exercises with their respective stakeholders. For example, Parish Council's consultation exercises further broadened the reach of the consultation although RBC has no control over the timings, breadth or methods of these consultations.
5. As part of the Preferred Options consultation and the Publication consultation meetings or exhibitions were held to coincide with each consultation period. These are detailed in appendix 3 to this note. They included parish council meetings, meetings arranged with local groups, specially arranged drop in sessions or exhibition boards at retail centres in Rugby town. Leaflets and consultation forms were handed out and additional copies were left at venues for further distribution, an example of which is at appendix 4 to this note.
6. RBC engaged directly with those Parish Councils where growth had been proposed in the Preferred Options consultation in Main Rural Settlements. RBC attended established Parish Council meetings or specially arranged to meet with Parish Councils and members of the local community. Development packs were sent to all Parish Councils in summer 2016 to inform the forthcoming Publication Local Plan consultation document.
7. The purpose of the Main Rural Settlement development packs (LP44-50) was to enable discussion on the conclusions drawn for each of the sites and understand the Parish Councils' view on the most appropriate site for allocation, based on the information before them in the packs. This exercise for each of the Main Rural Settlements anticipated to take growth was undertaken in advance of, and therefore separate to the

wider Publication consultation. Some Parish Councils also undertook their own separate consultation processes.

8. Pages 13-16 of the SCI details the specific consultation methods the Council used to engage residents. The methods the Council used resulted in extensive press coverage in print media (see appendices 1 and 2 of this note) as well as local newspapers' digital channels. This mix of both digital and print media enabled the Council to reach residents who lack internet access. LP25 Regulation 22 Consultation Statement provides details of the consultation methods used on page 6 and demonstrates that the Council fully complied with the SCI (LP25).
9. Appendix 5 of the SCI states that "The Council will seek to use a diverse range of communication methods in order to ensure inclusive consultation." The range of consultation methods used is considered to have achieved 'inclusive consultation' as demonstrated by the volume of representations received. Detailed analysis of respondents is not a statutory requirement but a large number of representations from different parts of the Borough were received on the proposals of the Local Plan and that the consultation was able to reach a broad range of residents as possible for a new Local Plan.
10. The Council considers that the additional consultation that took place during the publication draft Local Plan (30th November 2016 - 11th January 2017) and the associated press coverage raised greater awareness of the Plan and gave additional opportunities for the public to comment on the plan. The high number of representations received could also indicate the consultation exercise was sufficient. Page 4 of LP25 illustrates this further: "As part of the extended consultation, meetings were arranged with local groups who had made representations to the Publication consultation. The meetings, attended by the Portfolio Holder for Growth and Investment, Head of Growth and Investment, Development Strategy Manager and members of the Development Strategy team, were an opportunity for the council representatives to explore the concerns raised" in the representations made to the Publication consultation. These are listed in Appendix 3 to this note.
11. It is considered that the collective impact of the various stages of consultation generated
12. awareness, and as owing to the length of time the consultations ran, there was greater opportunity for individuals to come into contact with one of the Council's consultation platforms.
13. The SCI specifically makes clear that the receipt of representations does not automatically mean changes to the proposals will be made. It is considered that identifying the key themes as well as specific issues arising from the consultations (evident throughout LP26 Regulation 22 consultation statement) demonstrates that representations have been taken into account. Therefore continuing to propose a site allocation despite substantial opposition is not considered to indicate that the consultation was inadequate. Housing need and site selection is identified through the

Council's evidence base, so objections to site allocations will not automatically lead to changes if other factors within the evidence base support a site allocation. As the SCI states, "Whilst we welcome and encourage comments, it is difficult to find solutions that satisfy all, but we do listen and seriously consider all comments and suggestions that are put forward in response to consultations" (P12, SCI).

14. In summary, the Council is satisfied that it has complied with statutory requirements (outlined in detail in LP26) and the Council adopted Statement of Community Involvement. Collectively, the various stages of consultation combined with the methods used served to reach a wide audience, which is demonstrated through a comparative reading of documents LP25 and LP26.

APPENDICES

- Appendix 1 - Local newspaper front covers during consultation period.
- Appendix 2 - Rugby Borough Council press releases
- Appendix 3 - List of Consultation events
- Appendix 4 - Publication Local Plan consultation leaflet

Press releases

https://www.rugby.gov.uk/news/article/1210/councillors_to_consider_consultation_on_future_housing_allocation ('Councillors to consider consultation on future housing allocation') – published 1 December 2015.

https://www.rugby.gov.uk/news/article/1263/councillors_to_consider_consultation_on_draft_housing_allocation_and_infrastructure ('Councillors to consider consultation on draft housing allocation and infrastructure') - published 12 July 2016

https://www.rugby.gov.uk/news/article/1279/consultation_to_start_on_draft_local_plan_and_infrastructure_delivery_plan ('Consultation to start on draft local plan and infrastructure delivery plan') – published 21 September 2016

'Council to consider additional Local Plan consultation' – published 8 November 2016

https://www.rugby.gov.uk/news/article/1320/local_plan_timetable_revised (Local Plan timetable revised) – published 20 February 2017

https://www.rugby.gov.uk/news/article/1342/special_council_meeting_postponed ('Special Council meeting postponed') – published 5 May 2017

https://www.rugby.gov.uk/news/article/1354/councillors_to_consider_allowing_public_examination_of_local_plan (Councillors to consider allowing publication examination of local plan') – published 13 June 2017

https://www.rugby.gov.uk/news/article/1356/plan_for_growth_to_be_sent_for_examination ('Plan for growth to be sent for examination') – published 22 June 2017

https://www.rugby.gov.uk/news/article/1362/borough_plan_submitted_to_secretary_of_state ('Borough plan submitted to secretary of state') – published 14 July 2017

https://www.rugby.gov.uk/news/article/1388/local_plan_examination_hearings_announced ('Local Plan hearings announced') – 5 December 2017

Press coverage

RUGBY ADVERTISER

Get the **i** newspaper **FREE** for a week
VOUCHERS INSIDE



HERE WE GO

The draft Local Plan threatens thousands of homes between Dunchurch and Bilton, a village near Grandborough and much more. It's now time to speak out.



By **RICHARD HOWARTH**
Richard.howarth@rugbyadvertiser.co.uk
01786 538972

Let battle commence... opposition to Rugby Borough Council's Local Plan has been gathering momentum and the official time to speak out is about to begin. The latest version of the plan

cludes thousands of homes on green fields between Bilton and Dunchurch, plus the surprise addition of a garden village planned in an open countryside near Grandborough.

Add in other proposals around the borough and there has been mounting criticism, with existing and new protest groups coming

organisation About Turn to co-ordinate the fight.

The critical consultation period opens on Monday, September 26 and will run until Friday, November 11. Details of how to comment and the relevant paperwork will be on the council's website from Monday.

The council said its plans are a response to national

with more than 6,000 homes to be built at the masts site, Rugby is being asked to take too many homes, including some Coventry hasn't got room for - and the proposals are flawed.

The council kicked off a series of consultations last night, Wednesday, in Newton, continue this evening, Thursday, at Ashlawn

time next week and beyond - the full list is on the council website.

Next Wednesday, September 28, sees two big meetings. An official consultation will be part of the Rugby Town West Community Forum at Bilton Methodist Church from 6.30-9pm.

That same evening three of the groups which are part

ing a meeting at Dunchurch Village Hall at 7.30pm.

The three are Stop Ashlawn Road Development, the Woodlands Residents' Association and Stand Against Ledge Farm Village.

About Turn spokesman Richard Allanaich said its meeting would point out the consequences of the Local Plan.

RUGBY ADVERTISER

Get the **i** newspaper **FREE** for a week
VOUCHERS INSIDE - SEE PAGE 24



'JUST SAY NO'

As a leading councillor says Rugby Borough Council's draft Local Plan is based on 'undefensible figures' and 'exaggerated claims' opponents are stepping up efforts to rally support against its implementation



MP Mark Pawsey.
RBC rejects MP's plea for more time to comment

By RICHARD HOWARTH
richard.howarth@rugbyadvertiser.co.uk
01783 539673

The campaign to stop huge swathes of countryside around Rugby being swamped by housing many people say is unnecessary is in full swing.

The official consultation on the new version of the draft Local Plan began on Monday of this week and runs until Friday, November 11.

The umbrella protest group About Turn has been in the forefront of rallying opposition and getting the various protest groups around the area to work together.

Three of the groups - Stop Ashlawn Road Development, the Woodlands Residents' Association and Stand Against Lodge Farm Village - held a meeting at Dunchurch Village Hall yesterday evening.

And this Saturday, October 1, the latter group is staging a big protest against the garden village at the Grandborough turn off the A45.



Saturday sees a protest rally against one of the new measures contained in the draft Local Plan - the garden village off the A45. The rally will take place by the Grandborough turn off the main road in the field marked by protest signs.

was one of the surprise additions to the latest version of the Local Plan.

They are inviting all opponents of the plan to turn out at 10.30am for a namstar at the Grandborough turn off the A45, where the protest signs shown above are situated.

ough MP Jeremy Wright will be there.

Cllr Howard Roberts, Independent Councillor for Dunsmore Ward at Rugby Borough Council has spoken out against the new Local Plan at every stage.

He said of the latest draft

proposed Local Plan to pass it will give builders the green light to commit development vandalism in the countryside around our historic town.

"The plan is based on indefensible figures and exaggerated claims for Rugby's housing over the next few

a new look at the projections and a more realistic plan for the future."

He also lambasted the council's plans for delivering the housing: "Not only are the plans dangerous for our heritage, they also omit any feasible plans for providing the infrastructure for the 30,000 extra people who the council say we can house.

"Where is the money for new roads, schools or health services? And, as importantly, who will be paying for these necessary components of a growing town?"

Cllr Roberts says he will lead a campaign against the plan from within the council, but also plans to speak with the Secretary of State for Local Government, the Planning Inspectorate and may seek a judicial review over the process for estimating housing numbers.

The draft Local Plan and supporting documents, including the consultation forms, are available at: www.

Rugby MP Mark Pawsey wrote to Rugby Borough Council requesting that the period of consultation on the updated Local Plan is doubled from six to 12 weeks.

He said with Rugby already due to get 6,200 new homes at the mast site, the updated Local Plan would add 'significant new housing growth in our area'.

He said the plan was a substantial document with many complicated supporting documents and people needed more time to study them.

He added: "For the sake of future generations, and to ensure that all new development is both sustainable and appropriate, I am calling for the council to extend the consultation period to 12 weeks."

But the council rejected his request saying it had to stick to the current timetable to meet a Government

RUGBY ADVERTISER



FUN AT FOOD FEST
PAGE 4



COFFEE GALORE
Macmillan photo special
PAGES 11-13

SHAPE OF THINGS?

If the draft Rugby Local Plan gets the go-ahead, borough council document shows what the idea of 5,000 houses on green fields between Dunchurch, Bilton and Cawston could look like in reality

By RICHARD HOWARTH
Richard.howarth@rugbyadvertiser.co.uk
01783 539973

The key battleground of Dunchurch is the next focus of Rugby Borough Council's consultation on the draft Local Plan.

The consultation on the latest version of the controversial document began last Monday, September 26 and runs until Friday, November 11.

The six-week chance for residents to have their say is accompanied by a series of consultation events being staged by the borough council.

These are under way and reach Dunchurch next week when there will be chance for residents to see the massive impact the plan could have.

The protest groups working together under the About Turn umbrellas to fight the plan have already been active in Dunchurch, with a lively meeting at the village hall last Wednesday.

and Stop Ashlawn Road Development.

The garden village is in the draft plan for up to 1,500 homes but the land between Dunchurch, Bilton and Cawston could see up to 5,000 homes and employment land filling the current open space.

At the official consultation meeting in Bilton last Wednesday many residents saw what this could look like for the first time when copies of a map included in the Draft South West Rugby Masterplan Supplementary Planning Document (SPD) were on show.

This map is not part of the current consultation but an indicator of what could follow if the plan is adopted.

The Dunchurch consultation is this Monday, October 10, at the village's community library, from 6pm to 9pm.

The consultations continue on Tuesday, October 11, at Brinklow Community Hall from 6.30pm to 9pm, at Ryton Village Hall on Wednesday, October 12, from 6pm to 9pm



Figure 6: DRAFT Development Framework plan

This is what could be in store between Dunchurch, Bilton and Cawston but this is not an actual plan and is not part of the current consultation on the draft

RUGBY ADVERTISER



Charity in the pink
FUNDRAISER SUCCESS - PAGE 12



Vote Rocco as top dog
SEE PAGE 13

POWER TO THE PEOPLE

By **RICHARD HOWARTH**
Richard.howarth@rpa.co.uk
01788 538673

Campaigners fighting Rugby's draft Local Plan are stepping up their efforts to help people turn their opposition into official responses to it.

The opening phase of the consultation has seen growing awareness of the huge growth proposed around Dunchurch and Bilton, the garden village and more.

But now campaign groups which are co-ordinating their opposition under the About Turn umbrella, want to see that awareness turned into actual responses to Rugby Borough Council.

Leaflets advertising the meetings.

They will be four meetings in the next week aimed at giving residents a helping hand with their comments.

This Saturday, October 15, Stop Ashlawn Road Development, SARD, and Sustainable Hillside and Rokeby Education, SHARE, will have a stand on Rokeby Playing Fields between 10am and 4pm.

They will provide advice on any comments local residents wish to make on the Local Plan.

Then on Tuesday, October 18, Woodlands Residents Association and Friends of Lime Tree Avenue are joining forces to explain the implications of the 5,000 extra houses in south-west Rugby.

Their meeting is at Rugby High School from 7.30pm.

On Wednesday, October 19, Hillside and Rokeby Community Association is hosting a helping-hand session at Rokeby Primary School. This will run from 7.30pm to 9pm.

Then on Thursday, October 20, members of Stand Against Lodge Farm Village are holding a marathon helping-hand event at Grandborough Village Hall. They intend to set up at 9am and keep going until 9pm.

A borough council spokesman said: "Any individual or organisation may submit a planning application for any site, at any time they choose."

All planning applications are considered on their merits against planning policies in place at the point in time when the decision is made."



Quarry fight goes on

While the Local Plan protest continues to rage, campaigners against the separate quarrying plans for the county have welcomed the latest changes but say they will fight on - see page 7.

car4u
07584687273

M.O.T TESTING STATION, SERVICE AND REPAIRS ALL MAKES AND MODELS

- MOT £30.00 for all petrol and Diesel cars • Computer Diagnostics £20.00
- Air Conditioning re-gas £30.00 (Full service, clean and re-gas package for £40.00)
- Wheel Alignment £30.00 • Local Collection and Delivery service available
- Competitive Servicing prices for both Mechanical & Electronic repairs

CAR 4u

21b Paynes Lane, Rugby, Warwickshire
UK CV21 2UH • www.car4u.uk.com
01788 877272 • 07584 687273

RUGBY ADVERTISER



WALK THIS WAY

Football comeback

SEE PAGE 11



We've got a beach
SCHOOL CELEBRATES

SEE PAGES 12 & 13



One of the many contentious parts of the draft Local Plan is the proposed garden village near Grandborough - protesters were out in force on Saturday to spread the word.

DON'T BULLY US!

By RICHARD HOWARDS
Richard.howards@rugbyadvertiser.co.uk
01788 535972

A packed protest meeting at Rugby High School on Tuesday evening heard a rousing speech against the town being bullied into unnecessary housing.

sociation and heard a defiant speech from John Roberts of the Friends of Lime Tree Avenue Association.

While acknowledging the need for more houses, he turned his fire on the developers and landowners who, he claimed, were driving the massive growth in the draft Local Plan for their own interests and, 'Not for the benefit of the town or its residents'.

"Our town is famous world-wide for a character who stood up to the bullies, a certain Tom Brown. I really believe that if he was alive and here with us today he would be on our side.

"He would look at the plans to concrete over the fields, hedgerows, paths and lanes that he and his chums would run through and say... this is not acceptable!"

fresh look at the draft plan.

"Send it back to the planning department and ask them to review it. Surely, we are in a different world post-Brexit? So previous statistics and projections should not be relied upon to decide such important long-term planning."

He said they should get it reviewed by independent assessors, insist on firm in fra-

rather build all the homes that they have already received planning permission for."

■ Stand Against Lodge Farm Village is at Grandborough village hall today, Thursday, until 6pm helping people to respond. About Turn holds a public meeting at Browns-over Hall Hotel at 7.30pm next Wednesday. Woodlands RA holds a response advice session at the town hall on

Cyclists told to slow down

Speeding cyclists have been causing problems at Draycote Water. There have been two recent incidents of children being knocked down by cyclists going so fast they couldn't avoid them.

See page 6.

New date for new surgery

In last week's Advertiser we highlighted the fear from campaigners that the proposed new GP surgery for Browns-over was being delayed again. NHS England has now suggested a date for it to be open.

See page 5.

Permits go all Stratford

Resident parking permits in Rugby are going up by 86 per cent, to match the figure already charged in the Stratford-on-Avon district. County council bosses say the permits have been heavily subsidised and putting the fee up will help its financial woes. That

RUGBY ADVERTISER



STAR TURN
Celebrity visits dancers
SEE PAGE 4



CAT ATTACK
Moggie Bonnie doing well after operation
SEE PAGE 5

ONE WEEK TO HAVE A SAY

Deadline approaches for people to put forward their views on draft **Local Plan** which will change borough forever

By **RICHARD HOWARTH**
richard.howarth@rpa.co.uk
01883 528972

It's seen the biggest flurry of protest around Rugby borough for many a year but the end is nigh for consultation on the draft Local Plan.

The latest version of the plan has ignited passions with its vision of a massive increase in housing for Rugby borough.

Key flashpoints have been the 5,000 homes between Dunchurch and Bilton, and the surprise inclusion of a 1,500 home garden village off the A45 near Grendborough.

These two would be major contributors to the target of adding more than 12,000 homes to Rugby by 2031.

And while they put the focus on housing, the plan also covers transport, education and health care.



Dunchurch Junior School filled up quickly for Monday's meeting.

A number of protest voices heard by the deadline of next Friday, November 11.

Dunchurch Parish Council held an extraordinary parish council meeting at the village junior school to highlight its opposition to the plan.

Chairman Cllr Peter Eccleson outlined a range of reasons why the council believes the plan is fundamentally flawed.

And he stressed: "We are appealing to you to write individual responses to Rugby Borough Council outlining your objections to the plan."

His and the other main presentations are on the Dunchurch Parish Council website.

Speaking after Monday's meeting resident Ann Wright said: "We are looking at the destruction of Dunchurch village."

"I am not sure that people realise the full threat."

■ Objections can be made until the deadline of Friday, November 11.



'We need more houses'

RUGBY ADVERTISER



**WORLD BEATER
HALL OF FAME'S
A WINNER**
PAGES 4 AND 5



**CHRISTMAS SPIRIT
School's kind
thoughts**
PAGE 3

CURIOUSER AND CURIOUSER

After repeated refusals to give people more time to respond to the controversial draft Local Plan, **Rugby Borough Council** is going to consider doing just that at its meeting next week

By Richard Howarth
Richard.howarth@rpa.co.uk
01788 532672

MPs have asked, campaigners have asked but until this week, it's been a case of the lady's not for turning in terms of extending the draft Local Plan consultation period.

But though the road to Damascus has yet to appear on the many new developments around the town, Cllr Heather Timms, Rugby Borough Council's portfolio holder for growth and investment, has opened the door to possible U-turn.

A surprise statement released on Tuesday said councillors are to be asked to reconsider the Local Plan timetable at a meeting to be



Far left from us to suggest the presence of Guy Fawkes had an impact when he appeared on the town hall steps last Friday when Stand Against Lodge Farm village campaigners handed in petition and letters of objection...

held next Tuesday, November 15. The meeting will be at Rugby Town Hall at 7pm and is open to the public. The statement said a re-

port of the council's executive director, published at the request of the council's cabinet, highlights public concern over the consultation period

that was decided at a meeting of councillors held in July. But it stresses the council can't legally extend the current period - due to end tomorrow, Friday - but can opt for a further consultation.

As a result, the report asks councillors to decide whether to continue developing the Local Plan without further consultation, or to undertake a further six-week consultation starting on November 30.

In the statement, Cllr Timms said: "The current Local Plan consultation closes this week and through the numerous meetings I have attended and correspondence we have received, it is apparent that Rugby residents want more time to consider the proposals and respond accordingly."

TURN TO PAGE 6 →



**Remember, remember -
special fireworks night**
See pages 12-13

● The Rugby Advertiser - bringing you the news and giving the community a voice since 1846

£5 off your MOT test and 10% off our winter service check only with this voucher

M.O.T TESTING STATION, SERVICE AND REPAIRS ALL MAKES AND MODELS

CAR 4u

- MOT £30.00 for all petrol and Diesel cars • Computer Diagnostics £20.00
- Air Conditioning re-gas £30.00 (Full service, clean and re-gas package for £40.00)
- Wheel Alignment £30.00 • Local Collection and Delivery service available
- Competitive Servicing prices for both Mechanical & Electronic repairs

21b Paynes Lane, Rugby, Warwickshire
UK CV21 2UH • www.car4u.co.uk
01788 877272 • 07584 687273

RUGBY ADVERTISER



NEVER FORGET
REMEMBRANCE, PAGES 11-13



Step into Christmas
Light switch-on Page 7

Brand new brand for town centre

To add to the excitement of the World Rugby Hall of Fame opening today – see page 3 – our town centre marketing has been given a bold makeover. The new branding features the line ‘the Rugby town’ to highlight its role as the birthplace of the game. It also uses a strapline, ‘find yourself here’ to be used to distinguish Rugby town a centre to visitors and shoppers,

Independently of any business or organisation. It has been launched by Rugby Borough Council and Rugby First as part of the borough council’s town centre action plan and was unveiled earlier this week at the World Rugby conference and exhibition in London. The branding work was carried out by Sutton Coldfield-based Cole Turn to page 9



Cllr Heather Timmins and Alisha Giffon, of Rugby First show off the new branding.

DING, DING, ROUND 2

By **RICHARD HOWARTH**
Richard.howarth@rugbyadvertiser.co.uk
01786 539972

Forget the Queen's Speech, put the Monopoly away, there's a new family entertainment on offer across Rugby borough this Christmas.

With the deft touch of a Top Gear presenter, Rugby Borough Council completed

its sudden U-turn on its approach to the draft Local Plan and has agreed to a second round of consultation.

As recently as a fortnight ago the deadline for comments was last Friday, November 11 and there was no way it could be changed without bringing a plague of government inspectors raining down upon the borough.

But following a fiery debate at a full council meeting

at the Town Hall on Tuesday evening, the proposal which emerged last week went through – there will be a further period of consultation running for six weeks from November 30 to January 11.

While the choice between peeling sprouts or appealing for common sense on housing numbers over the festive season was voiced as a concern, it was a more significant issue over this second consultation

which triggered some bad-tempered exchanges in front of a packed public gallery.

The council's own document acknowledging the need for further consultation said infrastructure concerns were a big issue and, 'it is clear that the council has additional technical work to undertake in partnership with Warwickshire County Council'.

And the report said this work from the county council

would not be available until Friday. The Lib Dems proposed scheduling the new consultation to include the results of this work.

But their amendment was defeated and the original proposal carried, with a pledge that any responses arriving between now and November 30 would count.

Umbrella protest group About Turn, with maybe a nod to last week's Advertiser

'Curcuser...' headline posted a comment on the meeting on Facebook yesterday, Wednesday, with a photo of Dunchurch: 'Still under threat. The latest transport information Rugby Borough Council need will not be prepared by Warwickshire County Council until February. So last night the council voted to extend the consultation period until 11th January 2017. Lewis Carroll didn't come close.'

Appendix 3 - List of Consultation Events

Preferred Option

Date	Location	Venue	Notes
07/01/2016	Wolston	Village Hall, Main Street	
12/01/2016	Long Lawford	Hirst Close Community Centre, Round Avenue Long Lawford Rugby CV23 9AA	
13/01/2016	Ryton on Dunsmore	Ryton Village Hall, High Street, CV8 3EY	Parish Council meeting only
18/01/2016	Wolvey	Wolvey Bowling Club, Coventry Road, LE10 3LD	
19/01/2016	Rugby	Rokeby School Hall, Anderson Avenue, Rugby, CV22 5PE	
20/01/2016	Rugby	Jolly Abbott Pub, 241 Lower Hillmorton Road, Rugby, CV21 4AB	
21/01/2016	Monks Kirby	Village Hall, Brockhurst Lane, CV23 0RA	Parish Council meeting only
25/01/2016	Monks Kirby	Village Hall, Brockhurst Lane, CV23 0RA	
26/01/2016	Binley Woods	Village Hall, Rugby Road, CV3 2AX	Parish Council meeting only
27/01/2016	Rugby	Woodlands Residents Association, Bilton Junior School, Plantagenet Drive	
28/01/2016	Dunchurch	Dunchurch Library, School Street, CV22 6PA	
01/02/2016	Clifton	Townsend Memorial Hall, Church Street, CV23 0BH	
03/02/2016	Rugby	Clock Towers, Town Centre, CV21 3DU	
04/02/2016	Rugby	Tesco, Leicester Road	
04/02/2016	Grandborough	Village Hall, Sawbridge Road	
06/02/2016	Rugby	Clocktowers, Town Centre, CV21 3DU	

08/02/2016	Stretton on Dunsmore	Knightlow School, Hill Crescent, CV23 9NF	
10/02/2016	Church Lawford	Village Hall, School Street CV21 3DU	
11/02/2016	Brinklow	Community Hall, Broad Street, CV23 0LS	
12/02/2016	Rugby	Sainsbury's, Dunchurch Road	
12/02/2016	Binley Woods	Village Hall, Rugby Road, CV3 2AX	

Publication Draft

Date	Location	Venue	Notes
21/09/2016	Newton	Fosse Community Forum	
22/09/2016	Rugby	Rugby Town East Forum	
26/09/2016	Wolvey	Wolvey Baptist Church, School Lane, LE10 3LH	
28/09/2016	Rugby	Rugby Town West CF, Bilton Methodist Church	
29/09/2016	Grandborough	Grandborough Village Hall	
01/10/2016	Rugby	Clock Towers, Town Centre, CV21 3DU	
06/10/2016	Binley Woods	Village Hall, Rugby Road, CV3 2AX	
10/10/2016	Dunchurch	Dunchurch Library, School Street, CV22 6PA	
11/10/2016	Brinklow	Community Hall, Broad Street, CV23 0LS	
12/10/2016	Ryton on Dunsmore	Ryton Village Hall, High Street, CV8 3EY	
13/10/2016	Binley Woods	Village Hall, Rugby Road, CV3 2AX	
19/10/2016	Wolvey	Wolvey Baptist Church, School Lane, LE10 3LH	

List of meetings with Local Groups

Date	Group	Venue	Notes
03/01/2017	Stand Against Lodge Farm Village (SALFV)	Rugby Town Hall, Evreux Way, Rugby, CV21 2RR	
04/01/2017	Sustainable Hillside and Rokeby Education (SHARE)	Rugby Town Hall, Evreux Way, Rugby, CV21 2RR	
05/01/2017	Willoughby Parish Council	Rugby Town Hall, Evreux Way, Rugby, CV21 2RR	
06/01/2017	Friends of Lime Tree Village (FoLTA), and Woodlands Residents Association	Rugby Town Hall, Evreux Way, Rugby, CV21 2RR	
06/01/2017	Stop Ashlawn Road Development (SARD)	Rugby Town Hall, Evreux Way, Rugby, CV21 2RR	
09/01/2017	Dunchurch Parish Council	Rugby Town Hall, Evreux Way, Rugby, CV21 2RR	
10/01/2017	Thurlaston Parish Council	Rugby Town Hall, Evreux Way, Rugby, CV21 2RR	
10/01/2017	About Turn (Richard Allanach)	Rugby Town Hall, Evreux Way, Rugby, CV21 2RR	

RUGBY BOROUGH COUNCIL PUBLICATION LOCAL PLAN

Comments received during the consultation on the Preferred Options Local Plan, which ran from Monday 14 December 2015 to Friday 12 February 2016, have informed the publication version of the Local Plan.

Rugby Borough Council is now satisfied it has a sound Local Plan and wishes to submit this version to the Secretary of State for Communities and Local Government for examination, following approval from Full Council in December this year.

The Local Plan will then be examined by an independent Inspector whose role is to assess whether the plan has been prepared in accordance with the duty to co-operate, legal and procedural requirements, and whether it is sound.

A local planning authority should submit a plan for examination which it considers 'sound' – namely that it is:

- **positively prepared** – the plan should be prepared based on a strategy which seeks to meet objectively assessed development and infrastructure requirements, including unmet requirements from neighbouring authorities where it is reasonable to do so, and consistent with achieving sustainable development;
- **justified** – the plan should be the most appropriate strategy when considered against reasonable alternatives, based on proportionate evidence;
- **effective** – the plan should be deliverable over its period and based on effective joint working on cross-boundary strategic priorities;
- **consistent with national policy** – the plan should enable the delivery of sustainable development in accordance with policies in the National Planning Policy Framework.

Rugby Borough Council is now seeking views on the publication version of the Local Plan in terms of legal compliance, compliance with the duty to co-operate and the four tests of soundness outlined above.

Please refer to our guidance on making formal written comments or representations to the consultation.

When submitting a comment or representation, please indicate whether you wish to take part in the independent examination of the plan.

Please note, all written comments and representations will be made publicly available and attributed.

HOW TO HAVE YOUR SAY

Consultation Period

Monday 26th September 2016 – Friday 11th November 2016

You can take part in the consultation on the publication Local Plan in the following ways:

By email: Localplan@rugby.gov.uk
By post: Publication Local Plan Consultation
Development Strategy Team
Rugby Borough Council
Town Hall
Evreux Way
Rugby
CV21 2RR

Online: www.rugby.gov.uk/LPconsultation

General advice on Making Formal Written Comments or Representations

- Clearly identify the policy/proposal you are commenting on, using the reference number given in the plan.
- If you are making an objection to, or supporting a policy, please say why, and if you want to see a policy or proposal changed, say how and put forward your own alternative and reasons for it.
- Keep your comments as simple as possible and organise them in a logical order.
- Concentrate on the planning issues and relate the comments where appropriate to legal compliance or the four tests of soundness.
- If objecting to certain aspects of a proposal it is important to stress where you agree with the local planning authority so attention can be focused on issues of conflict.
- Where necessary to support your comment, identify statements, policies and proposals from other planning documents. These other documents could be national policy, other planning policies, the sustainability appraisal or relevant technical reports and studies.

What Happens Next?

Here is the timetable to adoption of the Local Plan:

Stage	Dates
Publication Consultation	26th September – 11th November 2016
Submission to Inspectorate	December 2016
Examination in Public	April 2017
Adoption by RBC	July 2017

OTHER CONSULTATION TOPICS

Alongside the distribution strategy for required development in Rugby Borough, we are also consulting on policies that cover the following, important areas (for more information on the policies, download the full publication draft of the Local Plan at www.rugby.gov.uk/LPconsultation).



WHAT HAS THE RUGBY BOROUGH LOCAL PLAN GOT TO ACHIEVE?

The Local Plan will deliver a spatial planning strategy that provides the framework for future development in Rugby Borough and addresses the needs and opportunities of the area, for example, in relation to housing, employment and shops. It will be based on up-to-date and relevant data and evidence.

Rugby Borough Council is required to produce a Local Plan. If they don't, making decisions on planning applications will become more difficult and more may be decided by Inspectors. National Government policy will also be used as the default option instead of Local Policy, informed by evidence of the needs and constraints of the Borough.

National Planning Policy requires a Local Plan to deliver:

- The homes and jobs required in an area;
- The commercial, retail and leisure development required;
- Infrastructure for transport, telecommunications, waste management, water supply, flood risk, health, community and culture;
- Policies that provide for climate change mitigation and adaptation, conservation and enhancement of the natural and historic environment and sustainable development that protects and enhances the amenity of Borough residents and businesses.

In producing the Publication Local Plan, Rugby Borough Council has co-operated with adjacent authorities in order to address strategic issues such as housing and infrastructure. The achievement of this is a legal test and if this test is not passed, the Plan will not succeed through a Government examination.

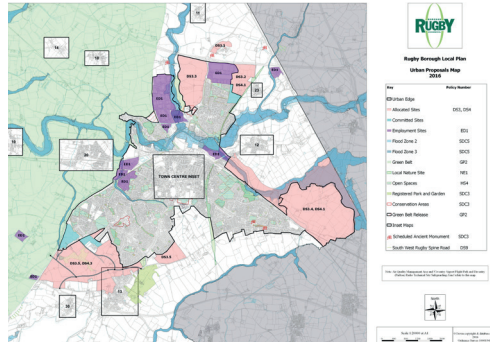
WHAT DEVELOPMENT DOES RUGBY BOROUGH NEED?

Between 2011 and 2031, Rugby Borough needs to accommodate:

- 12,400 houses
- 110 hectares of employment land

URBAN ALLOCATIONS

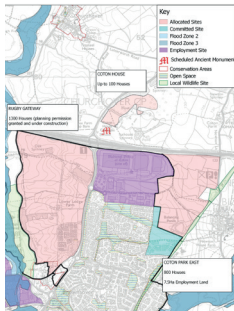
Rugby Town



North Rugby

POLICY DS7: COTON PARK EAST

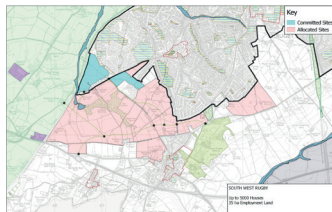
- A local centre that contains a one form entry primary school, with flexibility to increase to two form entry;
- Provision for fire and rescue services;
- Comprehensive Green Infrastructure Network which protects and, where possible, links existing habitats, particularly those present at the disused Great Central Railway local nature reserve;
- direct, high quality public transport link between the site, the railway station and the town centre;
- Provision of a comprehensive cycle network to link residential areas with key on-site facilities and to service centres and community facilities located in existing adjacent development areas.



South West Rugby

POLICY DS8: SOUTH WEST RUGBY

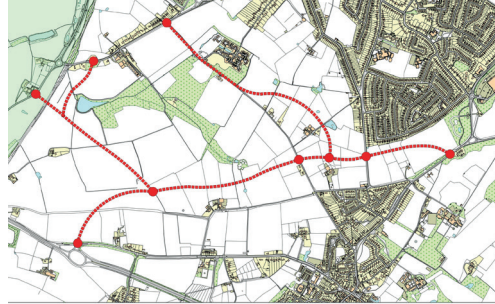
- At least one secondary school, co-located with a two form entry primary school;
- Further three primary schools, each to be two form entry, one rising to three form entry, as deemed necessary by WCC Education;
- 3 GP surgery, rising to 7 GP surgeries;
- Provision for one Safer Neighbourhood Team;
- Provision of land for an onsite fire and rescue provision;
- Comprehensive Green Infrastructure Network linking existing habitats and historic landscapes, in particular Cawston Spinney, including a 30m buffer to Cawston Spinney, maintained through proposals made in the allocation.



Provision of the onsite services and facilities must be made within the four local centres, by masterplanning and phasing through the South West Rugby Masterplan Supplementary Planning Document.

Roads, Cycling and Public Transport

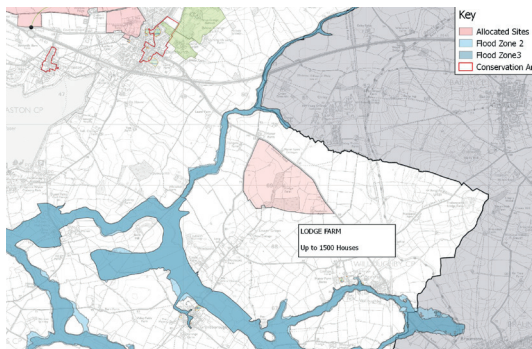
South West Rugby Spine Road Network



- Delivery of the full spine road network as early as possible post commencement of development on site;
- Comprehensive walking and cycling network to link residential areas with the key facilities on the site, such as schools, health centres and food stores; and
- High quality public transport services to Rugby Town Centre.

GARDEN VILLAGE

Lodge Farm



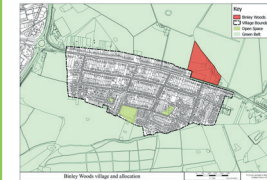
POLICY DS10: LODGE FARM

- A local centre;
- A one form entry primary school, with flexibility to increase to two form entry, if deemed necessary by Warwickshire County Council, within the local centre;
- Land for the provision of a GP surgery;
- A connected layout of functional streets and roads that ensure the on-site road network is efficient, providing an ease of movement for vehicles, pedestrians and cycles;
- A comprehensive Green Infrastructure Network, which protects, enhances and links into adjacent networks and utilises existing habitats where possible;
- Specifically regarding the areas of woodland on site, a comprehensive buffer must be identified and maintained through proposals made in the allocation;
- Landscaping on all site boundaries to mitigate the visual impact of the development, particularly upon the surrounding open countryside;
- Provision of a direct, high quality public transport link between the site and surrounding villages, Rugby and Daventry;
- A comprehensive cycle network across the settlement, linking residential areas with key on-site facilities and links to existing off site cycle networks to ensure longer distance cycle connections are provided;
- High quality telecommunications infrastructure, including broadband and mobile telephone services.

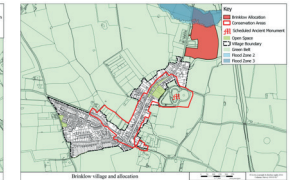
RURAL ALLOCATIONS

Village Allocation Maps

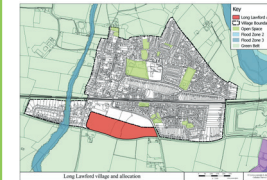
The following allocations in Main Rural Settlements will allow those settlements to play a role in helping to Rugby town to meet the strategic growth targets for the Borough. It is expected that these sites will bring forward growth in the early stages of the plan, by 2022. Rugby Borough Council has engaged with Parish Councils to identify the most suitable sites.



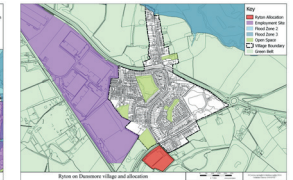
REF: DS 3.6 – LAND AT SHERWOOD FARM, BINLEY WOODS. DWELLINGS: UP TO 62



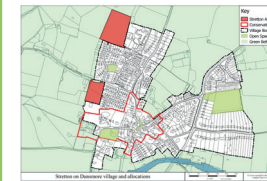
REF: DS 3.7 – LAND AT LUTTERWORTH ROAD, BRINKLOW. DWELLINGS: UP TO 100



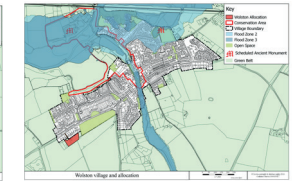
REF: DS 3.8 – LAND NORTH OF COVENTRY ROAD, LONG LAWFORD. DWELLINGS: UP TO 100



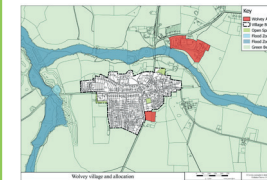
REF: DS 3.9 – LEAMINGTON ROAD, RYTON-ON-DUNSMORE. DWELLINGS: UP TO 75



REF: DS 3.10 – THE OLD ORCHARD, PLOTT LANE, STRETTON-ON-DUNSMORE. DWELLINGS: UP TO 25
REF: DS 3.11 – LAND OFF SQUIRES ROAD, STRETTON-ON-DUNSMORE. DWELLINGS: UP TO 50



REF: DS 3.12 – LINDEN TREE BUNGALOW, WOLSTON LANE, WOLSTON. DWELLINGS: UP TO 15



REF: DS 3.13 LAND AT COVENTRY ROAD, WOLVEY. DWELLINGS: UP TO 15
REF: DS 3.14 – WOLVEY CAMPUS, LEICESTER ROAD, WOLVEY. DWELLINGS: UP TO 85

POLICY DS6: RURAL ALLOCATIONS

Proposals for the development of rural allocations should be supported with information outlining how the specific characteristics of each site have been considered in the masterplanning, design and viability assessments of proposals.