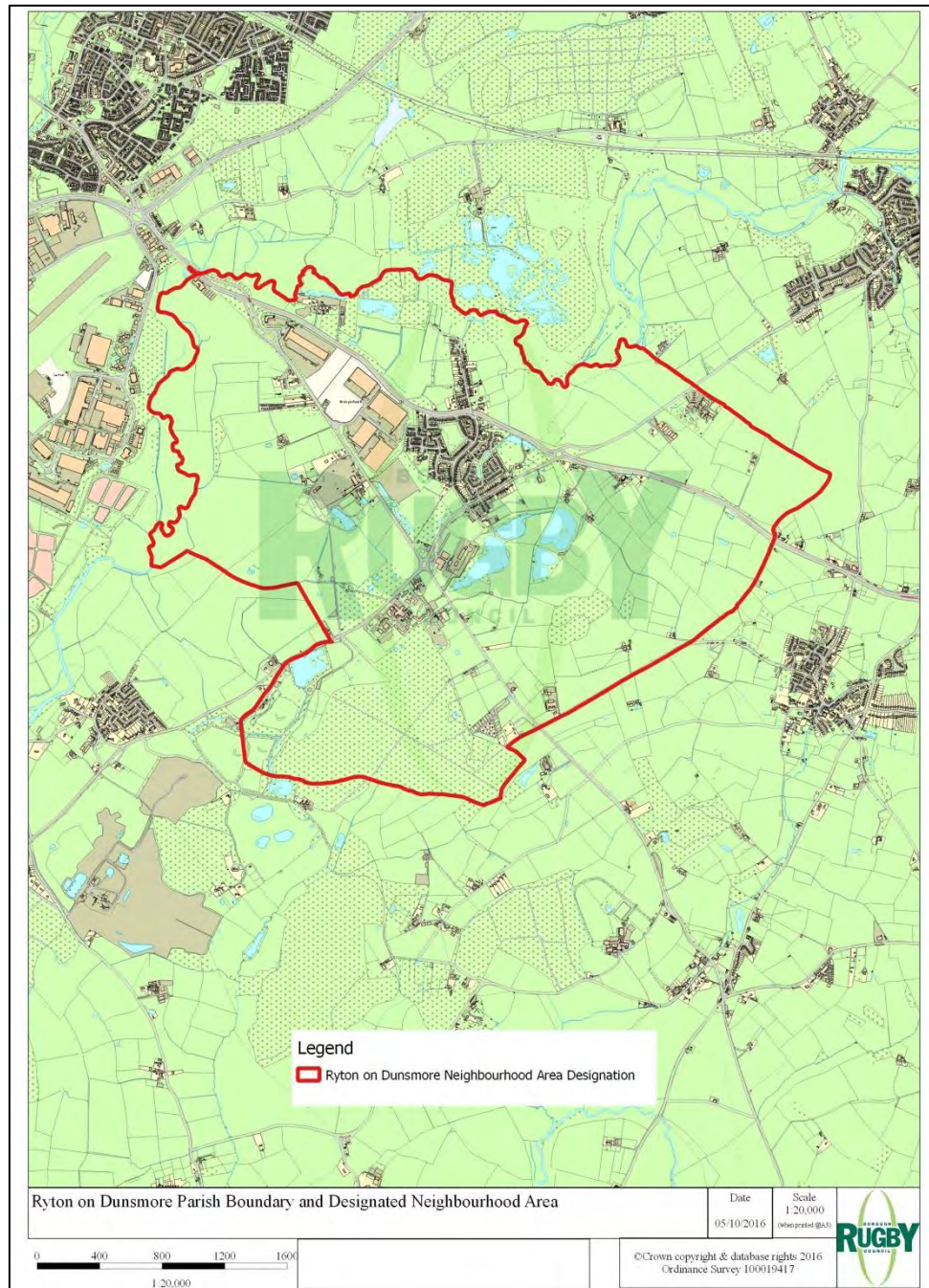


## Publication of Decision under Regulation 7 of the Neighbourhood Planning (General) Regulations 2012

Ryton on Dunsmore Parish Council's application to Rugby Borough Council for the designation of the area defined by the Civil Parish of Ryton on Dunsmore, as shown on the map below, as a Neighbourhood Area for the purpose of neighbourhood planning is **APPROVED**.



**Date of Decision: 11<sup>th</sup> October 2016**

This decision notice and the map of the area is viewable on <https://www.rugby.gov.uk/rytonondunsmorenp>

For further information on Neighbourhood Planning please email [LocalPlan@rugby.gov.uk](mailto:LocalPlan@rugby.gov.uk) or call 01788 533631